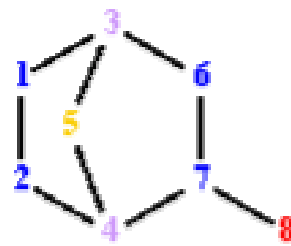
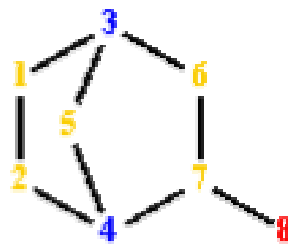
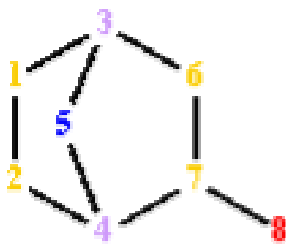




*Leonardo Electronic Journal
of Practices and Technologies*

Issue 1

*July-December
2002*



ISSN 1583-1078



U.T. Pres

Leonardo Electronic Journal
of Practices and Technologies

ISSN 1583-1078

Issue 1

July-December

2002

Leonardo Electronic Journal of Practices and Technologies

<http://lejpt.utcluj.ro>

Edited by
U.T. Pres

Tel.: 0766-239997

Chief redactor
Lorentz JÄNTSCHI

E-mail: lori@lejpt.utcluj.ro

Editorial board

- Gheorghe LAZEA, Prof. Ph. D. Eng. (automatics),
T. Univ., Cluj-Napoca, RO
- Elena ZAHARIEVA-STOJANOVA, Asist. Prof. Ph. D. Eng. (computer sciences),
T. Univ., Gabrovo, BG
- Ivan SIMEONOV SIMEONOV, Asist. Prof. Ph. D. Eng., (computer systems),
T. Univ., Gabrovo, BG
- Rosen STEFANOV IVANOV, Asist. Prof. Ph. D. Eng., (computer technologies),
T. Univ., Gabrovo, BG
- Lorentz JÄNTSCHI, Asist. Prof. Ph. D. Sci. Eng., (informatics),
T. Univ., Cluj-Napoca, RO
- Maria MICULA, Prof. Ph. D. Sci., (mathematics),
A. S. V. M. Univ., Cluj-Napoca, RO
- Mihai DAMIAN, Assoc. Prof. Ph. D. Eng., (engineering),
T. Univ., Cluj-Napoca, RO
- Elena Maria PICA, Prof. Ph. D. Sci. (chemistry),
T. Univ., Cluj-Napoca, RO
- Eugen CULEA, Prof. Ph. D. Sci., (physics),
T. Univ., Cluj-Napoca, RO
- Tiberiu RUSU, Prof. Ph. D. Eng., (environment),
T. Univ., Cluj-Napoca, RO
- Mircea SAVATTI, Prof. Ph. D. Eng., (agronomy),
A. S. V. M. Univ., Cluj-Napoca, RO

Contents

- 1.** Topological Substituent Descriptors, by Mircea V. DIUDEA, Lorentz
JÄNTSCHI, and Ljupco PEJOV p. 1-18

- 2.** Graph Theory. 1. Fragmentation of Structural Graphs, by Lorentz
JÄNTSCHI..... p. 19-36

- 3.** Graph Theory. 2. Vertex Descriptors and Graph Coloring, by Lorentz
JÄNTSCHI..... p. 37-52

- 4.** Loco2000. Technical Characteristics, by Gabriel MOISA p. 53-60

- 5.** Le Shuttle, the locomotive from Eurotunnel, by Gabriel MOISA . p. 61-68

- 6.** Free Software Development. 2. Chemical Database Management, by
Monica ȘTEFU, Mihaela Ligia UNGUREȘAN, and Lorentz
JÄNTSCHI..... p. 69-76